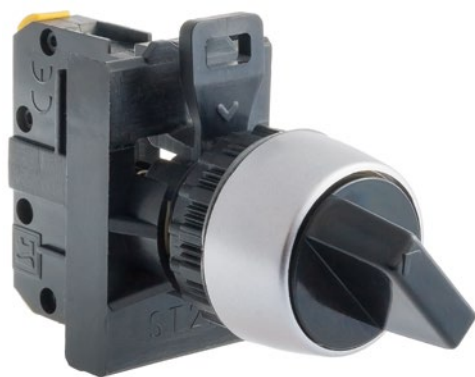


Complete knob-operated 2-position selector switch S



Technical data

Rated insulation voltage U_i	500 V
Rated continuous current $I_n=I_{th}$	10 A
Rated operational current I_e for AC-15	2.5 A (230 V) 1.6 A (400/500 V)
Rated operational current I_e for AC-13	4 A (24 V) 1 A (110 V) 0.25 A (220 V)
Switch short-circuit protection	10 A (fast fuse link) 1 kA (prospective short circuit current for $U_e=500$ V)
Mechanical endurance	0.3 mln (transposition cycles)
Electrical endurance	0.2 mln (at rated switching voltages and currents) 1.0 mln (switching cycles) - up to 80 VA (for AC electromagnets) - up to 10 W (for DC electromagnets)
Frequency of switching	up to 360 h ⁻¹
Ambient temperature	-40 ... +70°C (work) -40 ... +70°C (storage)
Vibration test (acc. to IEC 60068-2-6)	2...13, 2...100 Hz (frequency) ± 1 mm (amplitude) ±0.7 g (acceleration)
Shock test (acc. to IEC 60068-2-27)	15 g (peak acceleration) 11 ms (impulse duration)
Damp heat cyclic test (acc. to IEC 60068-2-30)	55°C (ambient temperature) 95% (relative humidity)
Salt mist cyclic test (acc. to IEC 60068-2-52)	severity 1
Protection level (Publ. IEC529) of pushbutton actuators after mounting in panel opening	IP65
Wire gauge	2× 1...2.5 mm ² (solid) 0.75...1.5 mm ² (stranded)
Working position	any
Terminal marking	PN-EN 50013
Compliance with the standard	PN-EN 60947-5-1 IEC 60947-5-1 IEC 60947-1

Accessories

Legend plate ST22-1901 for knob or key-operated selector switches

Ordering code

ST22- . -

		Switches
		10, 20, 30
		01, 02, 03
		11, 12
		21
		Colour
CZ	●	black
C	●	red
G	●	yellow
Z	●	green
N	●	blue
B	○	white
		Pushbutton type
P		maintained
PC		self-return from right

Description: the first digit represents the number of normally open circuits, the second digit represents the number of normally closed circuits.

Components

Pushbutton actuators

Knob-operated 2-position selector switch actuator P

Holders

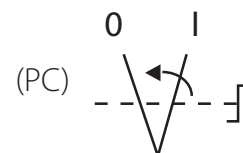
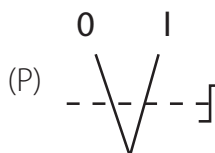
Holder ST22-6609

Switches

Switches ST22 rail-mounted

Standard switches ST22

Diagrams



Dimensions

