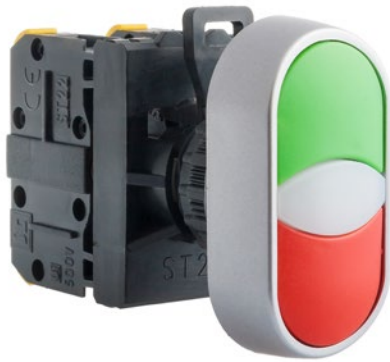


Complete twin pushbutton 2KL



Technical data

Rated insulation voltage U_i	500 V
Rated continuous current $I_n=I_{th}$	10 A
Rated operational current I_e for AC-15	2.5 A (230 V) 1.6 A (400/500 V)
Rated operational current I_e for AC-13	4 A (24 V) 1 A (110 V) 0.25 A (220 V)
Switch short-circuit protection	10 A (fast fuse link) 1 kA (prospective short circuit current for $U_e=500$ V)
Mechanical endurance	3.0 mln (transposition cycles)
Electrical endurance	0.2 mln (at rated switching voltages and currents) 1.0 mln (switching cycles) - up to 80 VA (for AC electromagnets) - up to 10 W (for DC electromagnets)
Frequency of switching	up to 3600 h ⁻¹
Ambient temperature	-40 ... +70°C (work) -40 ... +70°C (storage)
Vibration test (acc. to IEC 60068-2-6)	2...13, 2...100 Hz (frequency) ± 1 mm (amplitude) ±0.7 g (acceleration)
Shock test (acc. to IEC 60068-2-27)	15 g (peak acceleration) 11 ms (impulse duration)
Damp heat cyclic test (acc. to IEC 60068-2-30)	55°C (ambient temperature) 95% (relative humidity)
Salt mist cyclic test (acc. to IEC 60068-2-52)	severity 1
Protection level (Publ. IEC529) of pushbutton actuators after mounting in panel opening	IP65
Wire gauge	2× 1...2.5 mm ² (solid) 0.75...1.5 mm ² (stranded)
Working position	any
Terminal marking	PN-EN 50013
Compliance with the standard	PN-EN 60947-5-1 IEC 60947-5-1 IEC 60947-1

Accessories

Hermetic cap ST22-7608 (IP67)

Ordering code

ST22-2KL- -

	Colour
Z/C	● green/red
B/CZ	○ white/black
Z/Z	● green/green
C/C	● red/red
B/B	○ white/white
CZ/CZ	● black/black
	Switches
10, 20	
01, 02	
11	

Description: the first digit represents the number of normally open circuits, the second digit represents the number of normally closed circuits.

Components

Pushbutton actuators

Momentary twin pushbutton actuator 2KL

Holders

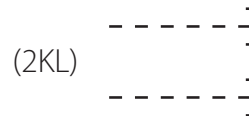
Holder ST22-6609

Switches

Switches ST22 rail-mounted

Standard switches ST22

Diagram



Dimensions

